



LIFTBOAT "KYLIE"

**CLASS 200
USCG CERTIFIED
Official No.: 1218093**

GENERAL DIMENSIONS

Length (Overall) "115'-0"
 Length (Barge Only) "111'-3"
 Beam (Overall) "74'-0"
 Beam (Barge Only) "66'-6"
 Depth (Barge Only) "10'-0"
 Open Deck Area 4500 Sq. Ft.

HULL CHARACTERISTICS

Gross Tonnage 190 Tons
 Net Tonnage 129 Tons
 Maximum Deck Cargo 700,000 lbs.
 (Estimated)

PADS

Length "32'-0"
 Width "16'-0"
 Depth "2'-0"
 Configuration Raked

JACKING

Max. Working Water Depth 163'-0"
 Max. Sea Conditions 5'
 (Jacking Up or Down)
 Total Jacks 24
 Total Jacking Rating
 1183.5 S-Tons (Estimated)
 Total Holding Rating
 1578.1 S-Tons (Estimated)

LEGS

Quantity 3
 Length 200'-0"
 Size 66" O.D."
 Wall Thicknesses "3/4" to 1"

LIVING QUARTERS

Crew Accommodations 7
 VIP Accommodations 2
 PACS Accommodations 34
 Total 43
 Central A/C and Heat
 Lounge with: Color TV, Sofas,
 and Lounge Seats
 Heads 10-All
 Levels
 Galley Seats 23
 Laundry 3
 Washers/Dryers

ELECTRONICS

VHF, SSB, Loud Hailer, Radar,
 Fathometer, GPS,
 Tilt Alarm, Cap Rock Communication
 Package
 w/2 Phone Lines, 1 Fax Line, and
 Internet Access)

PROPULSION

(2) Main Engines CAT C18
 Reduction Gear TWIN DISC

GENERATORS

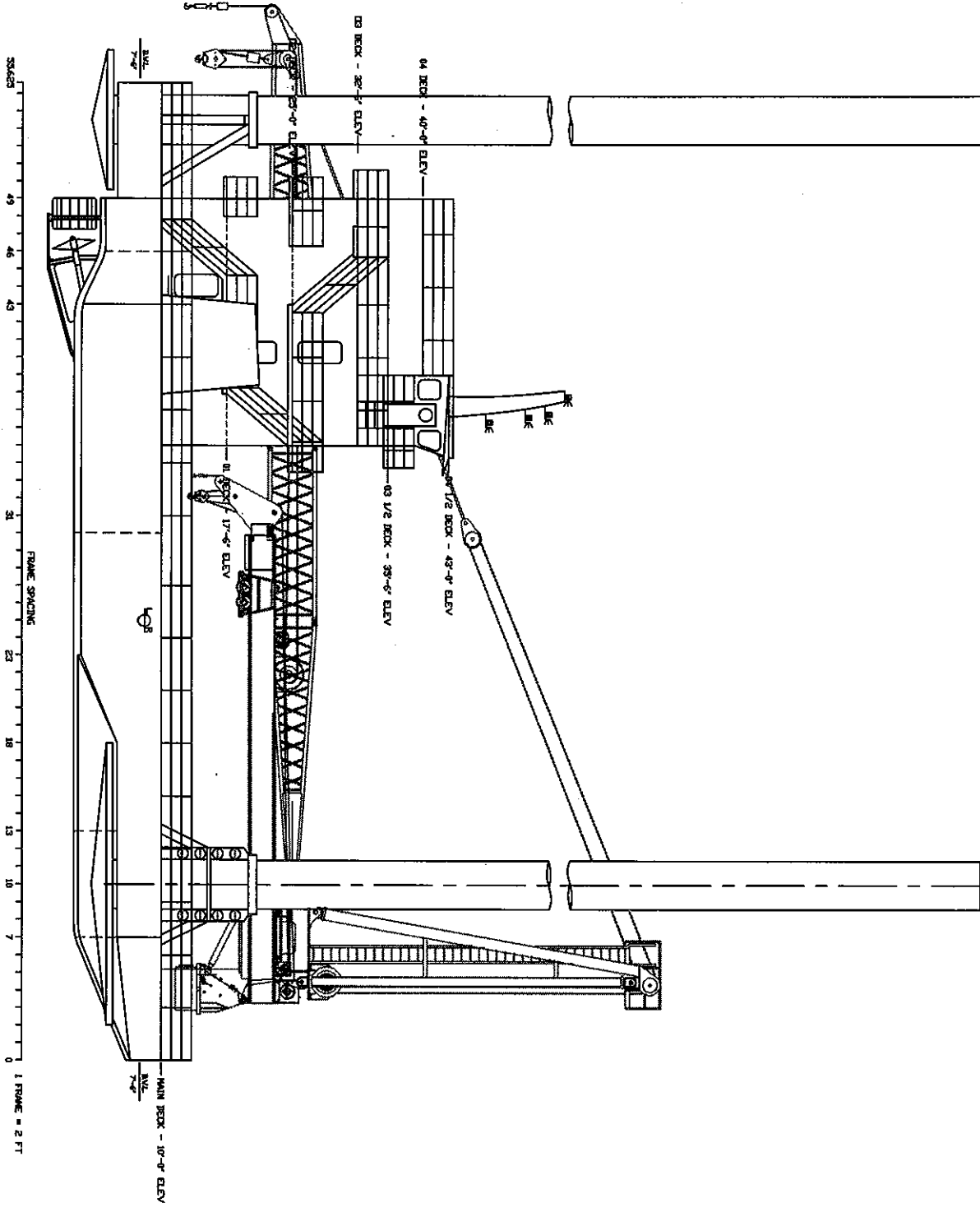
(2) 150kw Generators
 Isuzu

CRANES

Port-125 Ton 100' Lattice Boom
 Stbd-30 Ton 56' - 100' Telescopic Boom

CAPACITIES

Fuel Oil (Approx.) 9730 Gals.
 Potable Water (Approx.) 15,194 Gals.



OUTBOARD PROFILE
SCALE: 3/8" = 1'-0"

GENERAL INFORMATION

HULL LENGTH	111'-3"
HULL WIDTH	66'-6"
HULL DEPTH	10'-0"
LENGTH OVERALL	119'-0"
WIDTH OVERALL	74'-0"
FOOTING LENGTH	32'-0"
FOOTING WIDTH	16'-0"
FOOTING DEPTH	2'-6"
LEG LENGTH OVERALL	200'-0"
LEG DIAMETER	66"
LEG THICKNESS	1" / 3/4"
LEG MATERIAL	API 5L-X65
JACKS PER LEG	8TY EIGHT
JACKING RATING / JACK	65,275 S-TONS
HOLDING RATING / JACK	87,677 S-TONS
JACKING RATING / LEGS	33640 S-TONS
HOLDING RATING / LEGS	70123 S-TONS
TOTAL JACKS	8TY 24
TOTAL JACKING RATING	157818 S-TONS
TOTAL HOLDING RATING	204618 S-TONS
FUEL OIL CAPACITY	9,750 GAL.
PORTABLE WATER CAPACITY	12,194 GAL.
JACKING HYDRAULIC OIL	1,594 GAL.
CRANE HYDRAULIC OIL	789 GAL.
ACCOMMODATION CREW	7 MEN
ACCOMMODATION VIP	2 MEN
ACCOMMODATION PASG	34 MEN
ACCOMMODATION TOTAL	43 MEN

N/V KNIE MAHAR HALL NO. 153

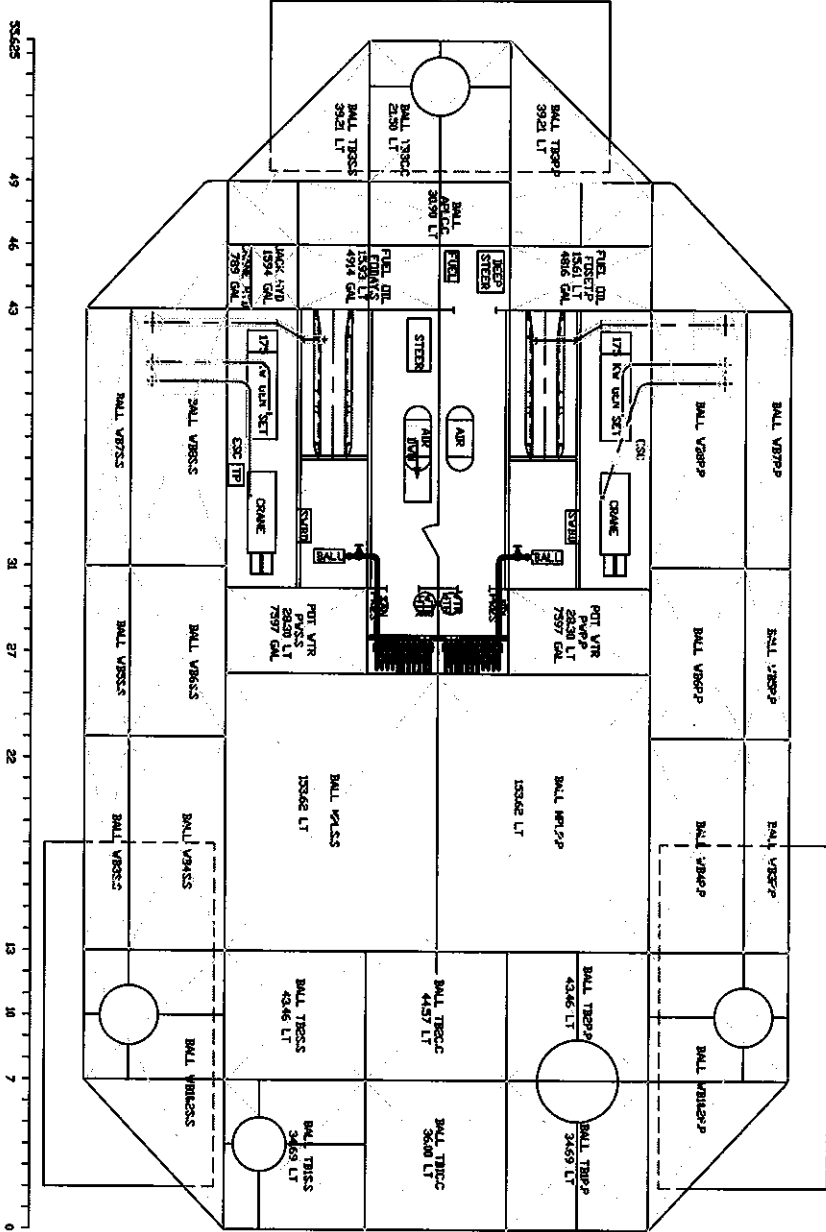
REVISIONS

DYNAMICS MARINE, INC.
2483 LITTLE LANE - NE, WESSON, MO 64091
681-643-2411

MARINE INDUSTRIAL FABRICATION, INC.

DESIGNED BY: OFFSHORE LIFTBOATS, L.L.C.
CLASS: 300-LB LIFTBOAT
OUTBOARD PROFILE

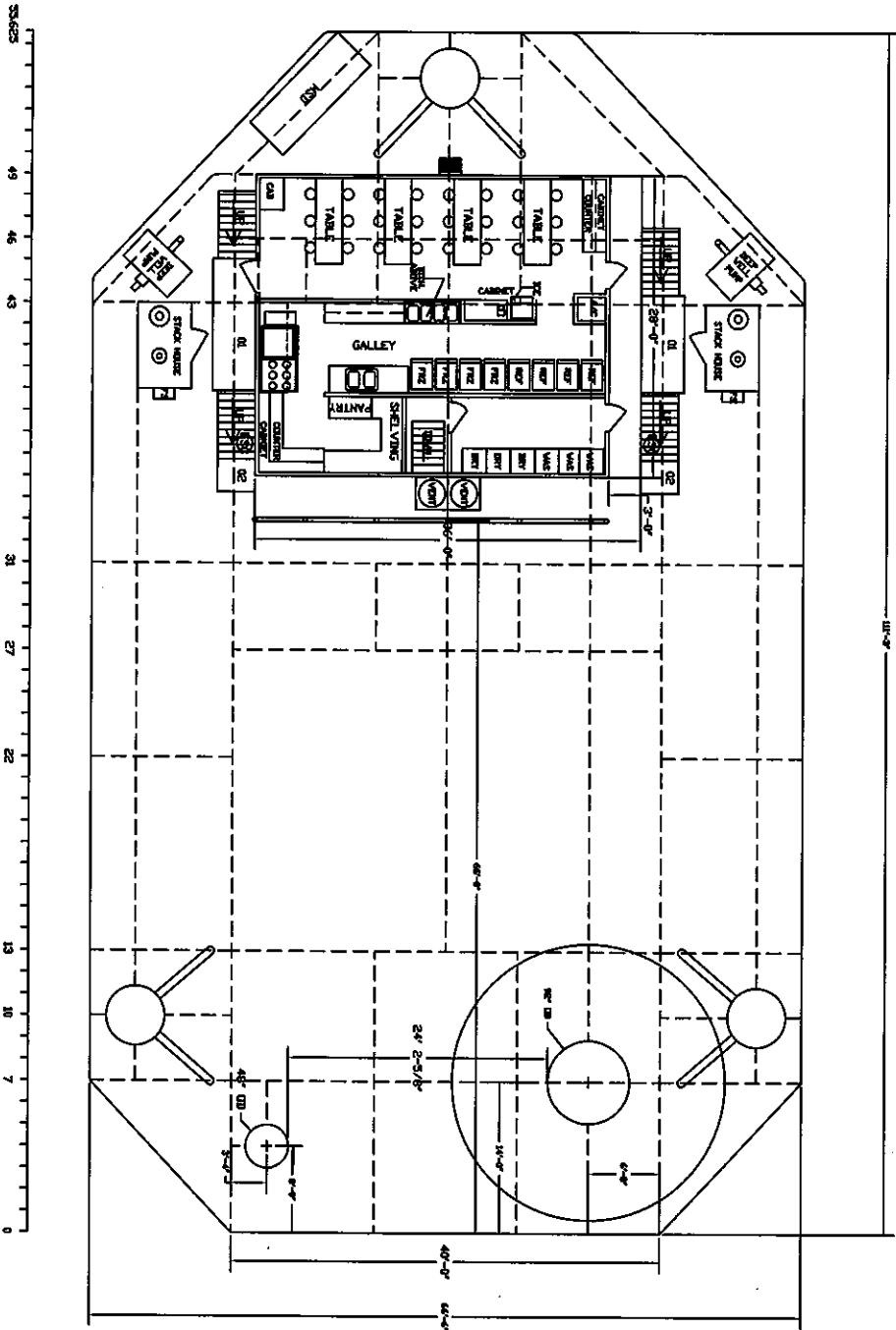
DATE: 10NDV08 APPV: [Signature]
BY: GT NID: GA-01



GENERAL ARRANGEMENT HOLD

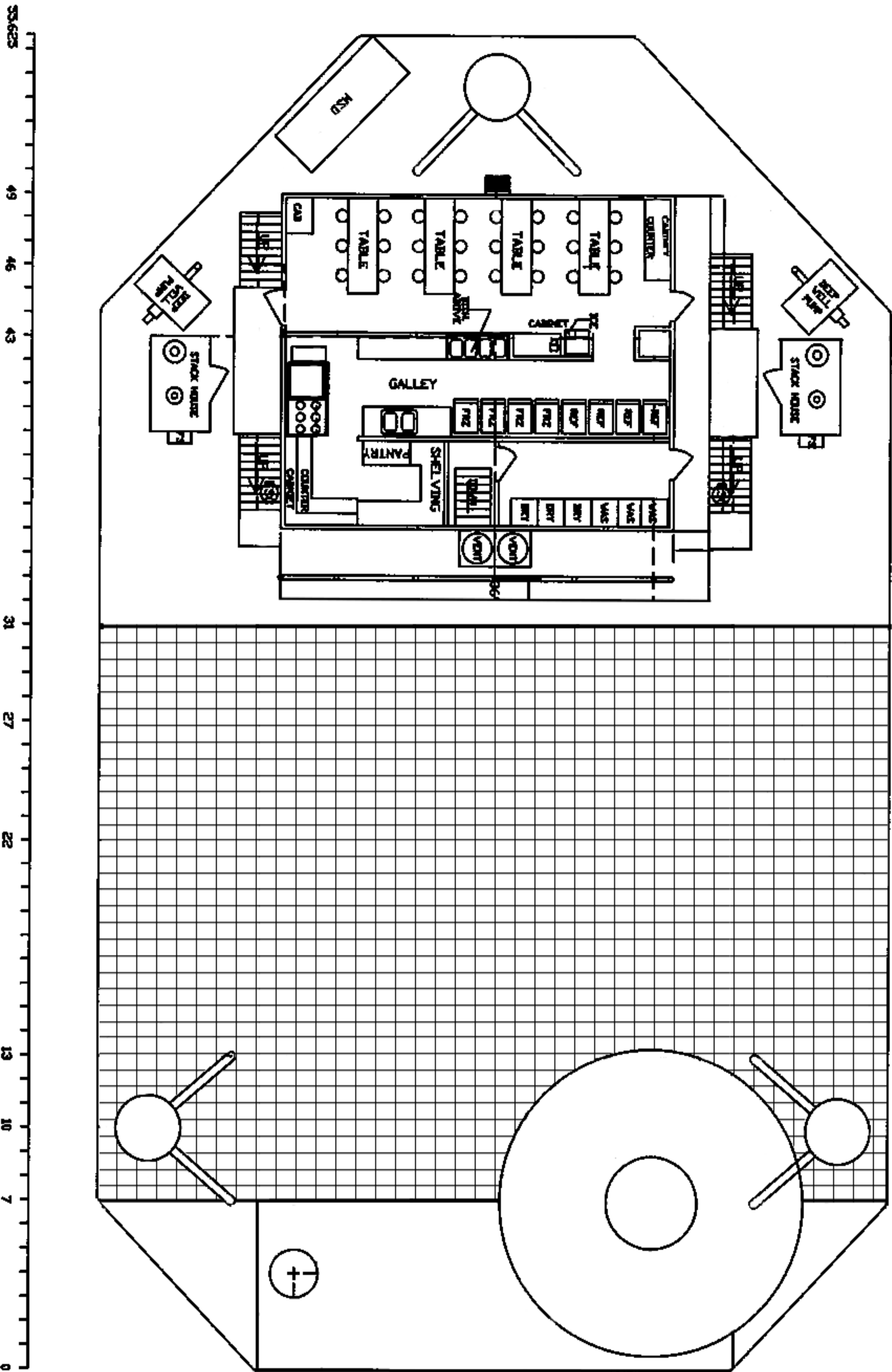
SCALE 3/16" = 1'-0"

NAVY/COAST GUARD HULL NO. 159	
REVISIONS	
DYNAMICS MARINE, INC.	
CLASS 200-LEVER LIFTBOAT	
GENERAL ARRANGEMENT HOLD	
MARINE INDUSTRIAL FABRICATION, INC.	
DETROIT, MICHIGAN	
602-643-5411	
DATE: 10NDV08	
BY: GT	APPV: [Signature]
ND GA-02	



GENERAL ARRANGEMENT MAIN DECK
SCALE 3/8" = 1'-0"

N/V KYLE HALMAR HULL NO. 153	
REVISIONS	
DYNAMICS MARINE, INC. 2483 LITTLE LAKE - MC WESSON, MS 39914 601-643-8411	
MARINE INDUSTRIAL FABRICATION, INC.	
DESIGNER: LIFTBOATS LLC	APPV: [Signature]
CLASS: 200-LEX LIFTBOAT	
GENERAL ARRANGEMENT MAIN DECK	
DATE: 10NDV08	
BY: GT	ND GA-03



GENERAL ARRANGEMENT MAIN DECK

SCALE 3/16" = 1'-0"

N/V KLUH HARDWAR HULL NO. 153

REVISIONS

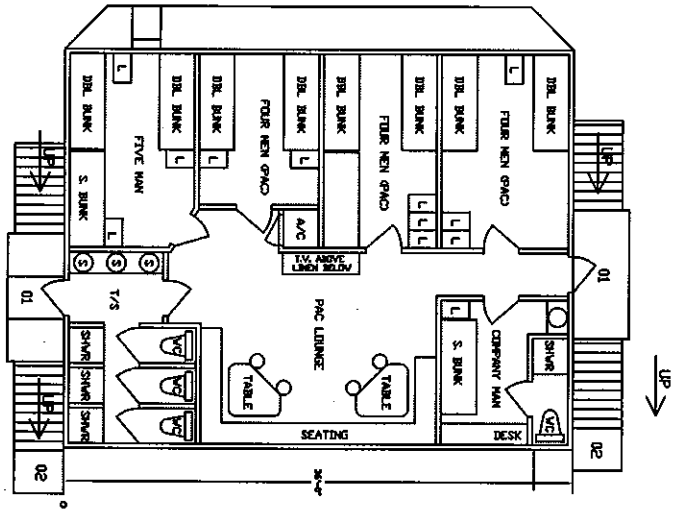
DYNAMICS MARINE, INC.
2483 LITTLE LANE - NEW VESSON, MS 39991
601-643-2411

MARINE INDUSTRIAL FABRICATION, INC.

DESIGNEE: LIFTBOATS, LLC
CLASS 200-LER LIFTBOAT
GENERAL ARRANGEMENT MAIN DECK

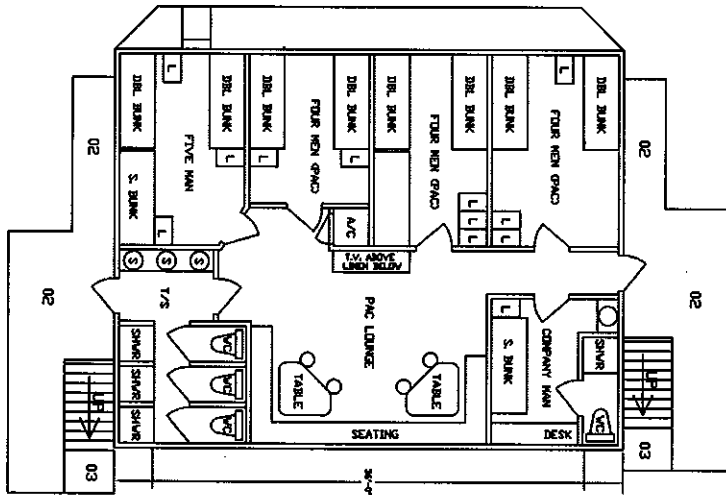
DATE: 10NDV08 APPV: [Signature]

BY: GT ND: GA-03



GENERAL ARRANGEMENT 01 LEVEL

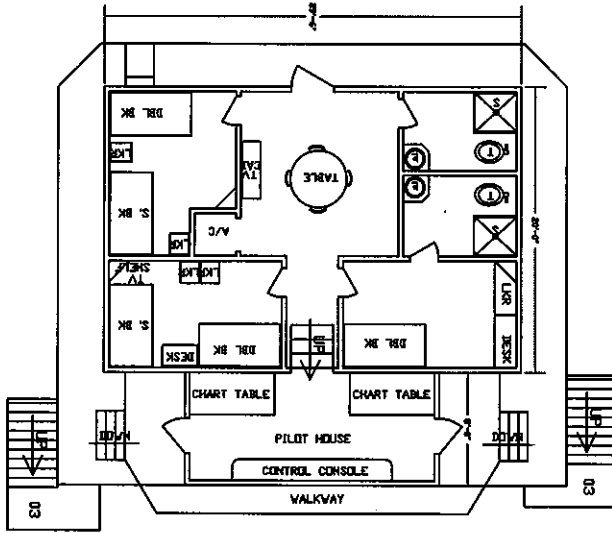
SCALE 1/4" = 1'-0"



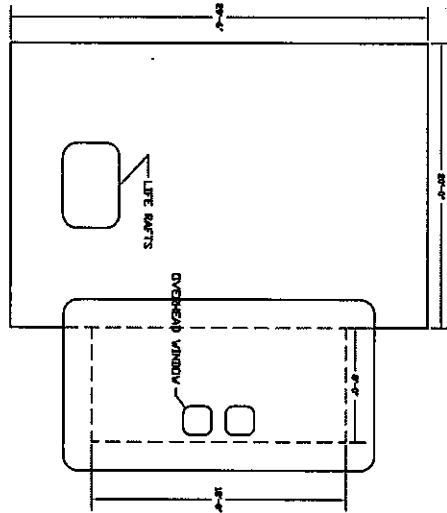
GENERAL ARRANGEMENT 02 LEVEL

SCALE 1/4" = 1'-0"

REVISED	
DYNAMICS MARINE, INC.	
2489 LITTLE LAKES DRIVE, SUITE 100, NEW ORLEANS, LA 70114	
PHONE: (504) 885-5411 FAX: (504) 885-5411	
MARINE INDUSTRIAL FABRICATION, INC.	
1725088 LEBLANC, LA	
CLASS 200-LER LIFTBOAT	
GENERAL ARRANGEMENT 01 AND 02 DECKS	
DATE: 10NDV08	APPV: 1
BY: GILLY	ND: GA-04



GENERAL ARRANGEMENT 03 LEVEL
SCALE 1/4" = 1'-0"



GENERAL ARRANGEMENT 04 LEVEL
SCALE 1/4" = 1'-0"

N/V KYLE MARINE HULL NO. 159	
REVISIONS	
DYNAMICS MARINE, INC.	
2483 LITTLE LAKE - NEW ORLEANS, LA 70191	
504-643-5441	
MARINE INDUSTRIAL FABRICATION, INC.	
DETROIT, MI	
CLASS 200-LER LIFTBOAT	
GENERAL ARRANGEMENT 03 AND 04 DECKS	
DATE: 10NDV08	APPV: [Signature]
BY: GILLY	ND: GA-05





